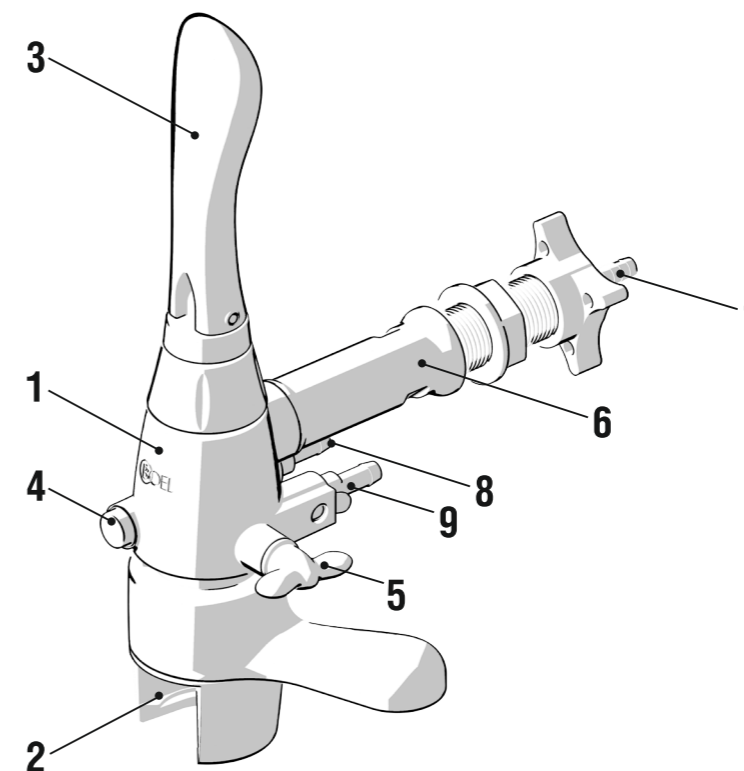




## The User Manual for the non-foaming dispensing device iTapX

### 1 iTapX appearance

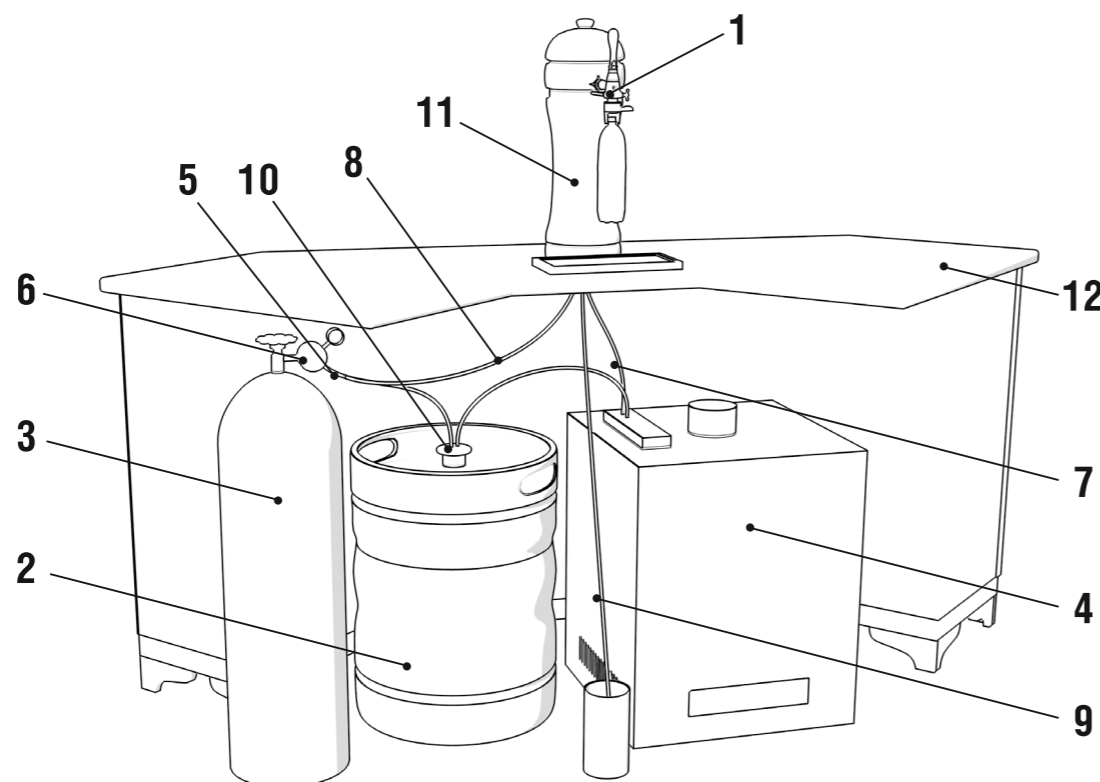


- 1 — Body
- 2 — Clamp-lock
- 3 — Handle for beverage serving
- 4 — CO<sub>2</sub> feed button
- 5 — Throttle knob
- 6 — Fitting 5/8" BSP
- 7 — Drink supply nipple
- 8 — CO<sub>2</sub> supply nipple
- 9 — Drain nipple

iTapX filling device is designed for rapid filling of foaming beverages from pressure vessels into plastic bottles with neck of PCO 1810/1881 or BPF standards

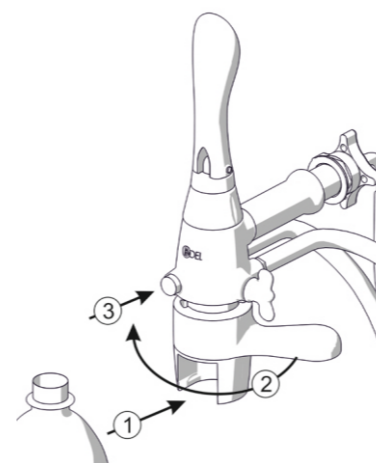
### 2 Connection diagram of the iTapX device

- 1 - iTap device
- 2 - Keg with the beverage
- 3 - CO<sub>2</sub> Cylinder
- 4 - Beverage Cooler
- 5 - Tee connector
- 6 - CO<sub>2</sub> regulator
- 7 - Beverage supply hose
- 8 - CO<sub>2</sub> supply hose
- 9 - Drain hose
- 10 - Dispensing coupler
- 11 - Beverage Font
- 12 - Bar desk



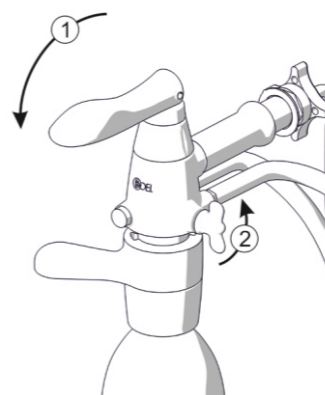
### 3 Sequence of actions for dispensing

Inserting the bottle and filling it with CO<sub>2</sub> gas



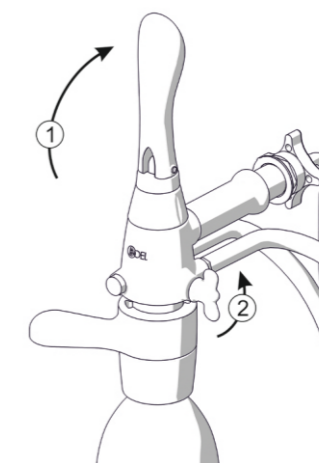
- ① Install the neck of the plastic bottle in the socket clamp-lock.
- ② Turn the clamp-lock clockwise, for tight clamping of the neck of the bottle to the housing.
- ③ Press the button to fill the bottle with CO<sub>2</sub> gas.

Filling the bottle with a drink



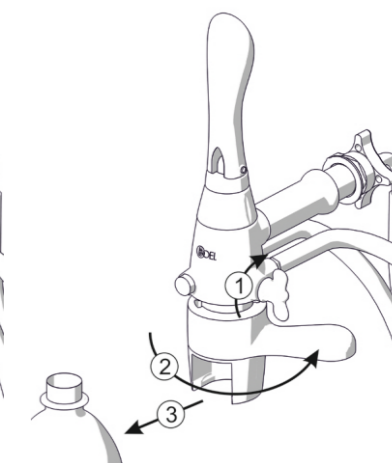
- ① Tilt the handle 90° degrees to open the beverage valve.
- ② Turn the throttle knob counterclockwise. The filling of the bottle with a drink will begin. Adjust the filling speed of the bottle by turning the throttle knob.

The end of filling

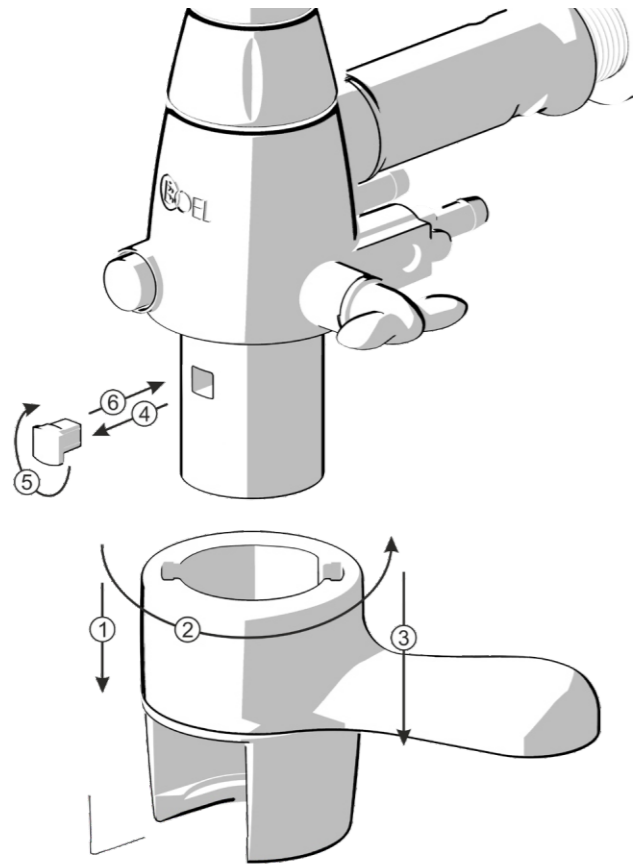


- ① After filling the bottle, rotate the handle 90 degrees back to take the vertical position.
- ② Fully open the throttle to equalize pressure inside the bottle with atmospheric by turning the throttle knob counterclockwise.

Removing the bottle



- ① Close the throttle by turning its knob clockwise to the end.
- ② Turn the spoon counterclockwise until it stops, in order to squeeze the bottle neck from the body.
- ③ Remove the bottle.



If necessary, the filling device has a clamping mechanism adjustment of the bottle neck from the standard.

For this:

- ① Move the clamp-lock body vertically upward until it stops.
- ② Turn counterclockwise until it stops.
- ③ Remove by moving down, as shown in the figure.
- ④ Remove the end-stop part.
- ⑤ Flip the end-stop part. Insert the end-stop part into place.
- ⑥ Install clamp-lock body in a starting position (installation clamp-lock body opposite of removal ③ ② ①)

\* End-stop part can be installed as from the front, as from the back of the iTAP body.

To service of the device allowed employees who have studied this manual and passed safety instructions how to work with the equipment for beverages bottling.

Kind of processing	Periodicity	Means for processing	Time (min.)	t (°C)	Source of working solution
Cleaning	Once a day (at the end of the day)	Water	10	60	City water supply
Rinsing		Water	15	20	City water supply
Disinfection	1 time per week	Neomoscan Seps, Lerades C178, Boel or a similar liquid used for food equipment disinfection	10 –15	60	Cleaning kegs
Rinsing	After Disinfection	Water	10	40 –60	City water supply
Rinsing		Water	15	20	City water supply

### Technology of washing iTap device

Daily, according to the Sanitary rules for the brewing and non-alcoholic industry, the dispensing device must be washed for 30 minutes with hot (60°C) and cold water. Weekly, you need to disinfect the device with antiseptics (Antiforminum, Calcium Hypochlorite) and then rinse thoroughly with water to remove disinfectant.

### Precautionary measures

To ensure the smooth operation of the device, it is necessary to observe some rules of work with it:

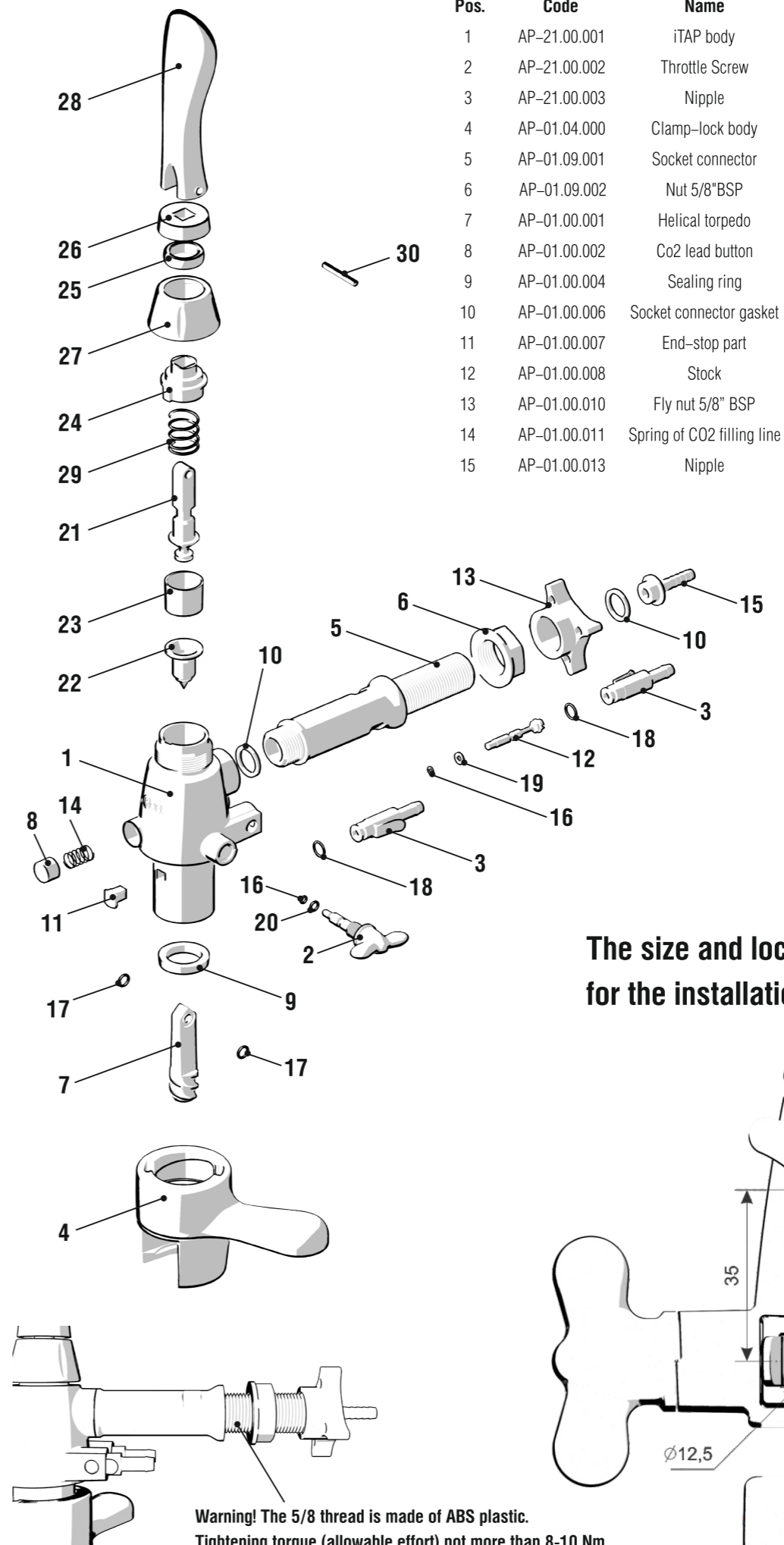
The packaging used must comply with sanitary and hygienic requirements for food packaging.

Containers must be clean and free from visible defects.

The device must be serviced regularly.

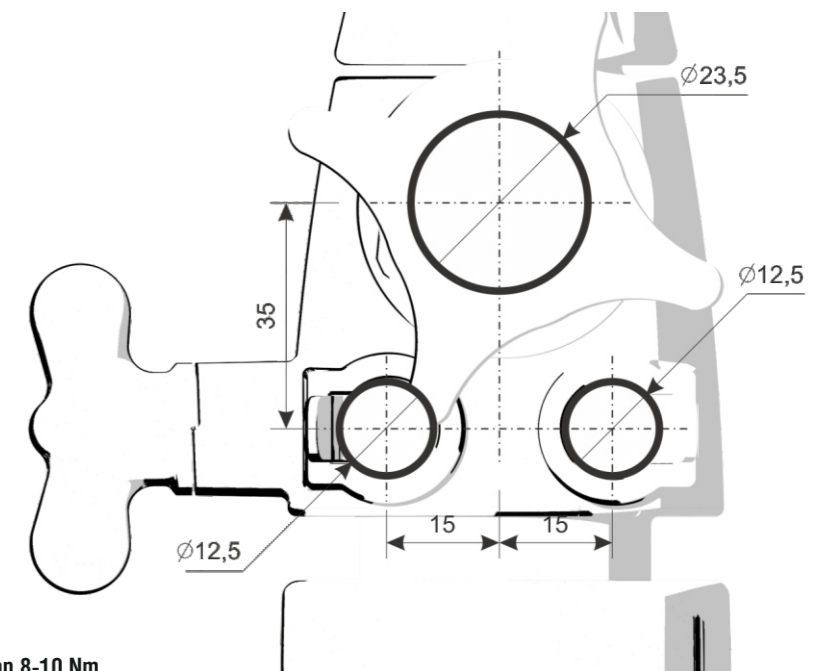
Do not set the unit to a higher 0.4 MPa. = 4,0 Bar = 58.02psi

The o-ring pos. 16 and 20 need to smear food grade silicone grease



Pos.	Code	Name	Pos.	Code	Name
1	AP-21.00.001	iTAP body	16	AP-01.00.031	O-ring
2	AP-21.00.002	Throttle Screw	17	AP-01.00.032	O-ring
3	AP-21.00.003	Nipple	18	AP-01.00.034	O-ring
4	AP-01.04.000	Clamp-lock body	19	AP-01.00.036-01	O-ring
5	AP-01.09.001	Socket connector	20	AP-21.00.031	O-ring
6	AP-01.09.002	Nut 5/8"BSP	21	AP-01.02.001	Handle stock
7	AP-01.00.001	Helical torpedo	22	AP-01.02.002	Seal
8	AP-01.00.002	Co2 lead button	23	AP-01.02.003	Valve seal
9	AP-01.00.004	Sealing ring	24	AP-01.02.004	Bushing
10	AP-01.00.006	Socket connector gasket	25	AP-01.02.005	Ring
11	AP-01.00.007	End-stop part	26	AP-01.02.006	Cover
12	AP-01.00.008	Stock	27	AP-01.02.007	Decorative nut
13	AP-01.00.010	Fly nut 5/8" BSP	28	AP-01.02.008	Handle
14	AP-01.00.011	Spring of CO2 filling line	29	AP-01.02.009	Spring
15	AP-01.00.013	Nipple	30		Pin DIN 7 4x28-St

### The size and location of holes for the installation of iTapX device



Warning! The 5/8 thread is made of ABS plastic.  
Tightening torque (allowable effort) not more than 8-10 Nm.